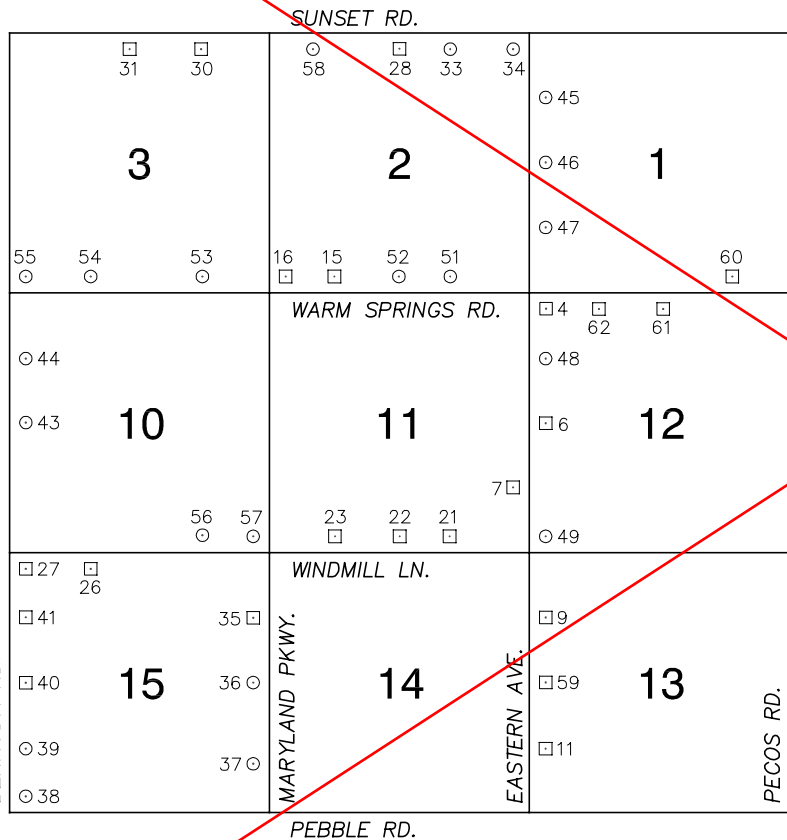


FOR REFERENCE ONLY

*2018 BENCHMARK NETWORK ADJUSTMENT SUPERSEDES THE 2003 BENCHMARK BOOK

Township 22 South, Range 61 East
Northeast Quarter



NORTH AMERICAN VERTICAL
DATUM OF 1988
- ALL ELEVATIONS IN METERS -

No.	STATION	ELEVATION (METERS)	DESCRIPTION
1			LOST 2003
2			LOST 2003
3			LOST 2003
4	8C21 12NWS	621.472	F N D RIVET AND SQUARE ALUMINUM PLATE IN TOP OF CURB, SOUTHEAST CORNER OF EASTERN AVE. AND WARM SPRINGS RD. NEAR THE PC OF EASTERN AVE.
5			LOST 2003
6	8C21 12W4	625.762	F N D RIVET AND SQUARE ALUMINUM PLATE IN TOP OF CURB, NORTHEAST CORNER OF EASTERN AVE. AND ROBINDALE RD. NEAR THE PC OF EASTERN AVE.
7	7C21 11SEE6	630.735	F N D RIVET AND SQUARE ALUMINUM PLATE IN TOP OF CURB, NORTHWEST CORNER OF EASTERN AVE. AND BLUE GRASS LN. NEAR THE PC OF EASTERN AVE.
8			LOST 2003
9	8C21 13NWW6	647.195	F N D RIVET AND SQUARE ALUMINUM PLATE IN TOP OF CURB, NORTHEAST CORNER OF EASTERN AVE. AND SHENANDOAH AVE. NEAR THE PC OF EASTERN AVE.
10			LOST 2003
11	4C21 13SWW6	650.888	F N D RIVET AND SQUARE ALUMINUM PLATE IN TOP OF CURB, ON THE EAST SIDE OF EASTERN AVE. AT FORD AVE.

CLARK COUNTY VERTICAL CONTROL v.2003

CLARK COUNTY SURVEYOR'S OFFICE
5051 SOUTH PARADISE ROAD
LAS VEGAS, NEVADA 89119
(702) 455-0640

CONVERSION FACTOR:
METERS X $\left(\frac{3937}{1200}\right)$ = U.S. SURVEY FEET

REVISED
08/01/2003

SHEET
1 OF 4

22-61
NE

FOR REFERENCE ONLY
***2018 BENCHMARK NETWORK ADJUSTMENT SUPERSEDES THE 2003 BENCHMARK BOOK**

No.	STATION	ELEVATION (METERS)	DESCRIPTION	No.	STATION	ELEVATION (METERS)	DESCRIPTION
12			LOST 2003	25	0C21 15N4	648.622	F N D RIVET AND SQUARE ALUMINUM PLATE IN TOP OF CURB, SOUTHWEST CORNER OF WINDMILL LN. AND POLLOCK DR. NEAR THE PC OF WINDMILL LN.
13			LOST 2003	26	0C21 15NNW6	656.486	F N D RIVET AND SQUARE ALUMINUM PLATE IN TOP OF CURB, SOUTHWEST CORNER OF WINDMILL LN. AND VISTA PALMAS PKWY. NEAR THE PC OF WINDMILL LN.
14			LOST 2003	27	0C21 15NWS	663.304	F N D RIVET AND SQUARE ALUMINUM PLATE IN TOP OF CURB, SOUTHWEST CORNER OF WINDMILL LN. AND BERMUDA RD. NEAR THE PC OF WINDMILL LN.
15	8C21 2SSW6	628.564	F N D RIVET AND SQUARE ALUMINUM PLATE IN TOP OF CURB, NORTHEAST CORNER OF WARM SPRINGS RD. AND TAMARUS ST. NEAR THE PC OF WARM SPRINGS RD.	28	6C21 2N4	626.417	F N D RIVET AND SQUARE ALUMINUM PLATE IN TOP OF CURB, SOUTH SIDE OF SUNSET RD. IN FRONT OF 1651 SUNSET RD., JUST WEST OF A DRIVEWAY IN FRONT OF PT'S PUB.
16	8C21 2SWS	631.698	F N D RIVET AND SQUARE ALUMINUM PLATE IN TOP OF CURB, NORTH SIDE OF WARM SPRINGS RD., JUST EAST OF THE PROJECTION OF MARILISSA LN.	29			LOST 2003
17			LOST 2003	30	6C21 3NNE6	636.728	F N D RIVET AND SQUARE ALUMINUM PLATE IN TOP OF CURB, SOUTHWEST CORNER OF SUNSET RD. AND PARADISE RD. NEAR THE PC OF SUNSET RD.
18			LOST 2003	31	6C21 3N4	643.507	F N D RIVET AND SQUARE ALUMINUM PLATE IN TOP OF CURB, SOUTHWEST CORNER OF SUNSET RD. AND GRIER DR. NEAR THE PC OF SUNSET RD.
19			LOST 2003	32			LOST 2003
20			LOST 2003	33	7C21 2NNE6 1997	620.861	S E T RIVET AND ROUND ALUMINUM PLATE IN TOP OF CURB, SOUTHWEST CORNER OF SUNSET RD. AND SURREY ST. NEAR THE PC OF SUNSET RD.
21	0C21 11SSE6	640.317	F N D RIVET AND SQUARE ALUMINUM PLATE IN TOP OF CURB, NORTHEAST CORNER OF WINDMILL LN. AND RODEO DR. NEAR THE PC OF WINDMILL LN.	34	7C21 2NES 1997	617.026	S E T RIVET AND ROUND ALUMINUM PLATE IN TOP OF CURB, SOUTHWEST CORNER OF SUNSET RD. AND EASTERN AVE. NEAR THE PC OF EASTERN AVE.
22	0C21 11S4	641.572	F N D RIVET AND SQUARE ALUMINUM PLATE IN TOP OF CURB, NORTHEAST CORNER OF WINDMILL LN. AND SPENCER ST. NEAR THE PC OF WINDMILL LN.	35	4C21 15NEE6	652.431	F N D RIVET AND SQUARE ALUMINUM PLATE IN TOP OF CURB, WEST SIDE OF MARYLAND PKWY. NEAR THE SHELBOURNE AVE. ALIGNMENT.
23	0C21 11SSW6	643.797	F N D RIVET AND SQUARE ALUMINUM PLATE IN TOP OF CURB, NORTHWEST CORNER OF WINDMILL LN. AND ASPENDALE DR. NEAR THE PC OF WINDMILL LN.	CLARK COUNTY VERTICAL CONTROL v.2003			
24			LOST 2003	CLARK COUNTY SURVEYOR'S OFFICE 5051 SOUTH PARADISE ROAD LAS VEGAS, NEVADA 89119 (702) 455-0640			CONVERSION FACTOR: METERS X $\left(\frac{3937}{1200}\right)$ = U.S. SURVEY FEET
				REVISED 08/01/2003	SHEET 2 OF 4	22-61 NE	

FOR REFERENCE ONLY
***2018 BENCHMARK NETWORK ADJUSTMENT SUPERSEDES THE 2003 BENCHMARK BOOK**

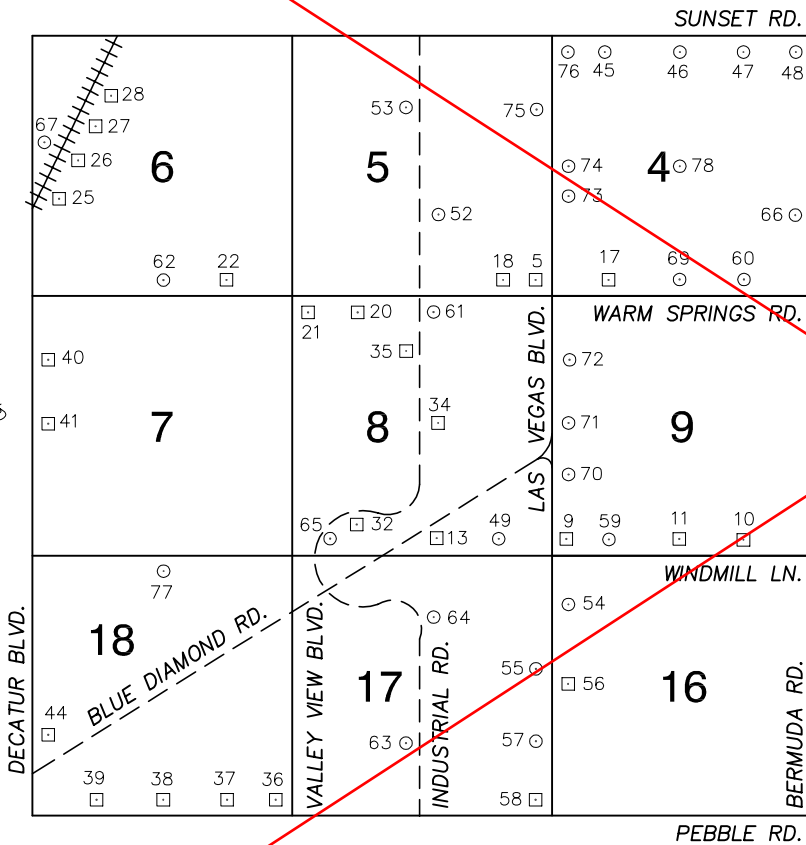
No.	STATION	ELEVATION (METERS)	DESCRIPTION	No.	STATION	ELEVATION (METERS)	DESCRIPTION		
36	8C21 15E4 1998	658.556	S E T RIVET AND ROUND ALUMINUM PLATE IN TOP OF CURB, SOUTHWEST CORNER OF MARYLAND PKWY. AND WIGWAM AVE. NEAR THE PC OF MARYLAND PKWY.	49	7C21 12SWS 1997	638.844	S E T RIVET AND ROUND ALUMINUM PLATE IN TOP OF CURB, NORTHEAST CORNER OF EASTERN AVE. AND WINDMILL LN. NEAR THE PC OF EASTERN AVE.		
37	8C21 15SEE6 1998	662.475	S E T RIVET AND ROUND ALUMINUM PLATE IN TOP OF CURB, SOUTHWEST CORNER OF MARYLAND PKWY. AND TORINO AVE. NEAR THE PC OF MARYLAND PKWY.	50			LOST 2003		
38	8C21 15SWS 1998	666.756	S E T RIVET AND ROUND ALUMINUM PLATE IN TOP OF CURB, NORTHEAST CORNER OF BERMUDA RD. AND PEBBLE RD. NEAR THE PC OF BERMUDA RD.	51	7C21 2SSE6 1997	625.340	S E T RIVET AND ROUND ALUMINUM PLATE IN TOP OF CURB, NORTHEAST CORNER OF WARM SPRINGS RD. AND BURNHAM AVE. NEAR THE PC OF WARM SPRINGS RD.		
39	8C21 15SWW6 1998	669.292	S E T RIVET AND ROUND ALUMINUM PLATE IN TOP OF CURB, NORTHEAST CORNER OF BERMUDA RD. AND CLAUSER AVE. NEAR THE PC OF BERMUDA RD.	52	7C21 2S4 1997	627.050	S E T RIVET AND ROUND ALUMINUM PLATE IN TOP OF CURB, NORTHEAST CORNER OF WARM SPRINGS RD. AND SPENCER ST. NEAR THE PC OF WARM SPRINGS RD.		
40	4C21 15W4	667.956	F N D RIVET AND SQUARE ALUMINUM PLATE IN TOP OF CURB, EAST SIDE OF BERMUDA RD. 55' SOUTH OF WIGWAM AVE.	53	7C21 3SSE6 1997	635.102	S E T RIVET AND ROUND ALUMINUM PLATE IN TOP OF CURB, NORTHEAST CORNER OF WARM SPRINGS RD. AND PARADISE RD. NEAR THE PC OF WARM SPRINGS RD.		
41	4C21 15NWW6	665.423	F N D RIVET AND SQUARE ALUMINUM PLATE IN TOP OF CURB, EAST SIDE OF BERMUDA RD. 40' NORTH OF SHELBOURNE AVE.	54	7C21 3SSW6 1997	646.292	S E T RIVET AND ROUND ALUMINUM PLATE IN TOP OF CURB, NORTH SIDE OF WARM SPRINGS RD. 450' EAST OF AMIGO ST., NORTHEAST CORNER OF DRIVEWAY.		
42			LOST 2003	55	7C21 3SWS 1997	658.222	S E T RIVET AND ROUND ALUMINUM PLATE IN TOP OF CURB, NORTHEAST CORNER OF WARM SPRINGS RD. AND BERMUDA RD. NEAR THE PC OF WARM SPRINGS RD.		
43	8C21 10W4 1998	659.885	S E T RIVET AND ROUND ALUMINUM PLATE IN AN ELECTRICAL PAD, EAST SIDE OF BERMUDA RD. 375' NORTH OF ROBINDALE RD.	56	7C21 10SSE6 1997	644.658	S E T RIVET AND ROUND ALUMINUM PLATE IN TOP OF CURB, NORTH SIDE OF WINDMILL LN., AT THE CENTER LINE OF PARADISE RD.		
44	8C21 10NWW6 1998	659.359	S E T RIVET AND ROUND ALUMINUM PLATE IN TOP OF CURB, NORTHEAST CORNER OF BERMUDA RD. AND ELDERADO LN. NEAR THE PC OF BERMUDA RD.	57	7C21 10SES 1997	642.170	S E T RIVET AND ROUND ALUMINUM PLATE IN TOP OF CURB, NORTHWEST CORNER OF WINDMILL LN. AND MARYLAND PKWY./PARADISE RD. INTERCONNECT NEAR THE PC OF WINDMILL LN.		
45	7C21 1NWW6 1997	618.776	S E T RIVET AND ROUND ALUMINUM PLATE IN TOP OF CURB, ON THE EAST SIDE OF EASTERN AVE. AT THE ENTRANCE TO SUNSET PARK.	58	7C21 2NNW6 1997	630.437	S E T RIVET AND ROUND ALUMINUM PLATE IN TOP OF CURB, SOUTHEAST CORNER OF SUNSET RD. AND ESCONDIDO ST. NEAR THE PC OF SUNSET RD.		
46	7C21 1W4 1997	619.725	S E T RIVET AND ROUND ALUMINUM PLATE IN TOP OF CURB, ON THE EAST SIDE OF EASTERN AVE., NEAR MAULE AVE.	59	4C21 13W4	653.197	F N D RIVET AND SQUARE ALUMINUM PLATE IN TOP OF CURB, NORTHEAST CORNER OF EASTERN AVE. AND WIGWAM AVE. NEAR THE PC OF EASTERN AVE.		
47	7C21 1SWW6 1997	622.638	S E T RIVET AND ROUND ALUMINUM PLATE IN TOP OF CURB, ON THE EAST SIDE OF EASTERN AVE. 30' NORTH OF THE RAIL ROAD TRACKS.	CLARK COUNTY VERTICAL CONTROL v.2003					
48	7C21 12NWW6 1997	623.776	S E T RIVET AND ROUND ALUMINUM PLATE IN TOP OF CURB, NORTHEAST CORNER OF EASTERN AVE. AND ELDERADO LN. NEAR THE PC OF EASTERN AVE.	CLARK COUNTY SURVEYOR'S OFFICE 5051 SOUTH PARADISE ROAD LAS VEGAS, NEVADA 89119 (702) 455-0640			CONVERSION FACTOR: METERS X $\left(\frac{3937}{1200}\right)$ = U.S. SURVEY FEET		
							REVISED 08/01/2003	SHEET 3 OF 4	22-61 NE

FOR REFERENCE ONLY
***2018 BENCHMARK NETWORK ADJUSTMENT SUPERSEDES THE 2003 BENCHMARK BOOK**

No.	STATION	ELEVATION (METERS)	DESCRIPTION	No.	STATION	ELEVATION (METERS)	DESCRIPTION
60	4C21 1SSE6	611.112	F N D RIVET AND SQUARE ALUMINUM PLATE IN TOP OF CURB, NORTHEAST CORNER OF WARM SPRINGS RD. AND TAMIYASU LN. NEAR THE PT OF TAMIYASU LN.				
61	4C21 12N4	614.941	F N D RIVET AND SQUARE ALUMINUM PLATE IN TOP OF CURB, SOUTH SIDE OF WARM SPRINGS RD. ± 0.5 MILES EAST OF EASTERN AVE. IN FRONT OF 3027 WARM SPRINGS RD.				
62	4C21 12NNW6	619.466	F N D RIVET AND SQUARE ALUMINUM PLATE IN TOP OF CURB, SOUTHEAST CORNER OF WARM SPRINGS RD. AND TOPAZ ST. NEAR THE PT OF WARM SPRINGS RD.				
				CLARK COUNTY VERTICAL CONTROL v.2003			
				CLARK COUNTY SURVEYOR'S OFFICE 5051 SOUTH PARADISE ROAD LAS VEGAS, NEVADA 89119 (702) 455-0640			CONVERSION FACTOR: METERS X $\left(\frac{3937}{1200}\right)$ = U.S. SURVEY FEET

FOR REFERENCE ONLY
***2018 BENCHMARK NETWORK ADJUSTMENT SUPERSEDES THE 2003 BENCHMARK BOOK**

**Township 22 South, Range 61 East
 Northwest Quarter**



NORTH AMERICAN VERTICAL
 DATUM OF 1988
 - ALL ELEVATIONS IN METERS -

No.	STATION	ELEVATION (METERS)	DESCRIPTION
1			LOST 2003
2			LOST 2003
3			LOST 2003
4			LOST 2003
5	8C21 5SES	681.375	F N D RIVET AND SQUARE ALUMINUM PLATE IN TOP OF CURB, NORTHWEST CORNER OF LAS VEGAS BLVD. AND WARM SPRINGS RD. 150' WEST OF INTERSECTION. (NEAR MAILBOX)
6			LOST 2003
7			LOST 2003
8			LOST 2003
9	0C21 9SWS	683.685	F N D RIVET AND SQUARE ALUMINUM PLATE IN TOP OF CURB OF PLANTER, NEAR 1/2 DELTA. NORTHEAST CORNER OF LAS VEGAS BLVD. AND WINDMILL LN.
10	0C21 9SSE6	669.441	F N D RIVET AND SQUARE ALUMINUM PLATE IN AN ELECTRICAL TRANSFORMER BOX PAD, NORTH SIDE WINDMILL LN. 150' WEST OF PLACID ST.
11	0C21 9S4	675.217	F N D RIVET AND SQUARE ALUMINUM PLATE IN AN ELECTRICAL TRANSFORMER PAD, NORTH SIDE OF WINDMILL LN. NEAR THE EAST PROPERTY LINE OF 170 WINDMILL LN.

CLARK COUNTY VERTICAL CONTROL v.2003

CLARK COUNTY SURVEYOR'S OFFICE
 5051 SOUTH PARADISE ROAD
 LAS VEGAS, NEVADA 89119
 (702) 455-0640

CONVERSION FACTOR:
 METERS X $\left(\frac{3937}{1200}\right)$ = U.S. SURVEY FEET

REVISED 09/01/2006	SHEET 1 OF 4	22-61 NW
------------------------------	-----------------	--------------------

FOR REFERENCE ONLY

***2018 BENCHMARK NETWORK ADJUSTMENT SUPERSEDES THE 2003 BENCHMARK BOOK**

No.	STATION	ELEVATION (METERS)	DESCRIPTION	No.	STATION	ELEVATION (METERS)	DESCRIPTION
12			LOST 2003	25	0C21 6SSW6	714.929	F N D INVERTED ALUMINUM MONUMENT AT DECATUR BLVD. AND ARBY AVE. EAST SIDE OF RAILROAD TRACKS AT BASE OF GRADE.
13	0C21 8S4	690.325	F N D RIVET AND SQUARE ALUMINUM PLATE IN AN ELECTRICAL METER BASE, EAST OF I-15 R/W FENCE, NORTH OF WINDMILL LN. 35' NORTH OF RV PARK BLOCK WALL.	26	0C21 6W4	712.667	F N D 5/8" REBAR IN LOWER PORTION OF THE NORTHEAST WING WALL OF BOX CULVERT UNDER RAILROAD TRACKS, NEAR THE PROJECTION OF BADURA AVE. REBAR PROJECTS ABOUT 3" ABOVE CONCRETE.
14			LOST 2003	27	0C21 6W6	708.413	F N D 5/8" REBAR IN LOWER PORTION OF THE NORTHEAST WING WALL OF BOX CULVERT UNDER RAILROAD TRACKS NEAR THE PROJECTION OF PAMALYN AVE. REBAR PROJECTS ABOUT 3" ABOVE CONCRETE.
15			LOST 2003	28	0C21 6NW6	709.262	F N D RIVET AND SQUARE ALUMINUM PLATE IN CONCRETE BASE OF RAILROAD SIGNAL POLE, EAST SIDE OF TRACKS, SOUTH OF PROJECTION OF MARTIN AVE.
16			LOST 2003	29			LOST 2003
17	0C21 4SSW6	675.884	F N D RIVET AND SQUARE ALUMINUM PLATE IN TOP OF CURB, NORTHWEST CORNER OF WARM SPRINGS RD. AND HAVEN ST. NEAR THE PC OF WARM SPRINGS RD.	30			LOST 2003
18	8C21 5SSE6	684.158	F N D RIVET AND SQUARE ALUMINUM PLATE IN CONCRETE BASE OF FIRE HYDRANT, NORTH SIDE OF WARM SPRINGS RD. 900' WEST OF LAS VEGAS BLVD. NEAR 2540 WARM SPRINGS RD.	31			LOST 2003
19			LOST 2003	32	0C21 8SSW6	697.770	F N D RIVET AND SQUARE ALUMINUM PLATE IN TOP OF CURB, ON THE SOUTH SIDE OF INDUSTRIAL RD. IN FRONT OF A FIRE HYDRANT, 900' NORTH OF BLUE DIAMOND RD.
20	8C21 8NNW6	695.968	F N D RIVET AND SQUARE ALUMINUM PLATE IN TOP OF CURB, SOUTHEAST CORNER OF WARM SPRINGS RD. AND POLARIS AVE.	33			LOST 2003
21	8C21 8NWS	700.572	F N D RIVET AND SQUARE ALUMINUM PLATE IN TOP OF CURB, SOUTHEAST CORNER OF WARM SPRINGS RD. AND VALLEY VIEW BLVD. NEAR THE PC OF WARM SPRINGS RD.	34	0C21 8C4	694.445	F N D NDOT CAP IN A CONCRETE MONUMENT, SOUTHEAST CORNER OF INDUSTRIAL RD. AND ROBINDALE RD. STAMPED "A 338+12.16".
22	8C21 6SSE6	705.965	F N D INVERTED ALUMINUM MONUMENT SET IN CONCRETE, ON THE NORTH SIDE OF WARM SPRINGS RD. 350' WEST OF HINSON ST. AT 4212 WARM SPRINGS RD.	35	0C21 8N6	694.212	F N D RIVET AND SQUARE ALUMINUM PLATE IN TOP OF CURB, WEST SIDE OF INDUSTRIAL RD. 700' SOUTH OF WARM SPRINGS RD.
23			LOST 2003	CLARK COUNTY VERTICAL CONTROL v.2003			
24			LOST 2003	CLARK COUNTY SURVEYOR'S OFFICE 5051 SOUTH PARADISE ROAD LAS VEGAS, NEVADA 89119 (702) 455-0640			CONVERSION FACTOR: METERS X $\left(\frac{3937}{1200}\right)$ = U.S. SURVEY FEET
				REVISED 2003	SHEET 2 OF 4	22-61 NW	

FOR REFERENCE ONLY

***2018 BENCHMARK NETWORK ADJUSTMENT SUPERSEDES THE 2003 BENCHMARK BOOK**

No.	STATION	ELEVATION (METERS)	DESCRIPTION	No.	STATION	ELEVATION (METERS)	DESCRIPTION	
36	2C21 18SES	703.273	F N D RIVET AND SQUARE ALUMINUM PLATE IN AN ELECTRICAL TRANSFORMER PAD, WEST SIDE OF VALLEY VIEW BLVD. 400' NORTH OF PEBBLE RD.	49	7C21 8SSE6 1997	687.808	S E T RIVET AND ROUND ALUMINUM PLATE IN TOP OF CURB, AT WINDMILL LN. AND THE PROJECTION OF WINDY RD.	
37	2C21 18SSE6	707.958	F N D RIVET AND SQUARE ALUMINUM PLATE IN AN ELECTRICAL TRANSFORMER PAD, NORTH SIDE OF PEBBLE RD. 100' EAST OF HINSON ST.	50			LOST 2003	
38	2C21 18S4	714.534	F N D RIVET AND SQUARE ALUMINUM PLATE IN AN ELECTRICAL TRANSFORMER PAD, NORTH SIDE OF PEBBLE RD. 60' WEST OF ARVILLE ST.	51			LOST 2003	
39	2C21 18SSW6	720.916	F N D RIVET AND SQUARE ALUMINUM PLATE IN CONCRETE MONUMENT, NORTHEAST CORNER OF CAMERON ST. AND PEBBLE RD.	52	7C21 5S6 1997	690.794	S E T RIVET AND ROUND ALUMINUM PLATE IN TOP OF CURB, NORTHEAST QUADRANT OF INDUSTRIAL RD. AND ARBY AVE. 30' NORTH OF ARBY AVE. ALIGNMENT.	
40	2C21 7NWW6	721.664	F N D RIVET AND SQUARE ALUMINUM PLATE IN CONCRETE MONUMENT, NORTHEAST CORNER OF DECATUR BLVD. AND ELDORADO LN. BY MAILBOX #4880 WEST ELDORADO LN.	53	7C21 5N6 1997	686.478	S E T RIVET AND ROUND ALUMINUM PLATE IN TOP OF CURB, NORTHWEST QUADRANT OF INDUSTRIAL RD. AND MARTIN AVE. NEAR THE PC OF INDUSTRIAL RD.	
41	2C21 7W4	723.036	F N D RIVET AND SQUARE ALUMINUM PLATE IN AN ELECTRICAL TRANSFORMER PAD, SOUTHEAST CORNER OF DECATUR BLVD. AND ROBINDALE ROAD.	54	7C21 16NWW6 1997	683.495	S E T RIVET AND ROUND ALUMINUM PLATE IN TOP OF CURB, SOUTHEAST CORNER OF LAS VEGAS BLVD. AND SHELBORNE AVE. NEAR THE PC OF LAS VEGAS BLVD.	
42			LOST 2003	55	7C21 17E4 1997	682.674	S E T RIVET AND ROUND ALUMINUM PLATE IN TOP OF CURB, NORTHWEST CORNER OF LAS VEGAS BLVD. AND WIGWAM AVE. NEAR THE PC OF LAS VEGAS BLVD.	
43			LOST 2003	56	4C21 16W4	682.522	F N D RIVET AND SQUARE ALUMINUM PLATE IN A CONCRETE FIRE HYDRANT PAD. AT 8560 LAS VEGAS BLVD. SOUTH. ON THE EAST SIDE OF LAS VEGAS BLVD.	
44	2C21 18SWW6	726.005	F N D RIVET AND SQUARE ALUMINUM PLATE IN CONCRETE MONUMENT, NORTHEAST CORNER OF DECATUR BLVD. AND FORD AVE. 300' SOUTH OF BLUE DIAMOND ROAD.	57	7C21 17SEE6 1997	683.272	S E T RIVET AND ROUND ALUMINUM PLATE IN TOP OF CURB, SOUTHWEST CORNER OF LAS VEGAS BLVD. AND FORD AVE. NEAR THE PC OF LAS VEGAS BLVD.	
45	7C21 4NNW6 1997	667.647	S E T RIVET AND ROUND ALUMINUM PLATE IN TOP OF CURB, SOUTH SIDE OF SUNSET RD. 1000' EAST OF LAS VEGAS BLVD.	58	4C21 17SES	682.702	F N D RIVET AND SQUARE ALUMINUM PLATE IN TOP OF CURB, NORTHWEST CORNER OF LAS VEGAS BLVD. AND PEBBLE RD. NEAR THE PC OF PEBBLE RD.	
46	7C21 4N4 1997	662.761	S E T RIVET AND ROUND ALUMINUM PLATE IN TOP OF CURB, SOUTHWEST CORNER OF SUNSET RD. AND GILESPIE ST. NEAR THE PC OF SUNSET RD.	59	7C21 9SSW6 1997	679.015	S E T RIVET AND ROUND ALUMINUM PLATE IN A CONCRETE MONUMENT, NORTHWEST QUADRANT OF WINDMILL LN. AND HAVEN ST.	
47	7C21 4NNE6 1997	656.494	S E T RIVET AND ROUND ALUMINUM PLATE IN TOP OF CURB, SOUTHWEST CORNER OF SUNSET RD. AND RAILROAD CROSSING LEADING INTO McCARRAN AIRPORT.	CLARK COUNTY VERTICAL CONTROL v.2003				
48	7C21 4NES 1997	651.312	S E T RIVET AND ROUND ALUMINUM PLATE IN TOP OF CURB, SOUTHWEST CORNER OF SUNSET RD. AND BERMUDA RD. NEAR THE PC OF SUNSET RD.	CLARK COUNTY SURVEYOR'S OFFICE 5051 SOUTH PARADISE ROAD LAS VEGAS, NEVADA 89119 (702) 455-0640		CONVERSION FACTOR: METERS X $\left(\frac{3937}{1200}\right)$ = U.S. SURVEY FEET		
						REVISED 2003	SHEET 3 OF 4	22-61 NW

FOR REFERENCE ONLY

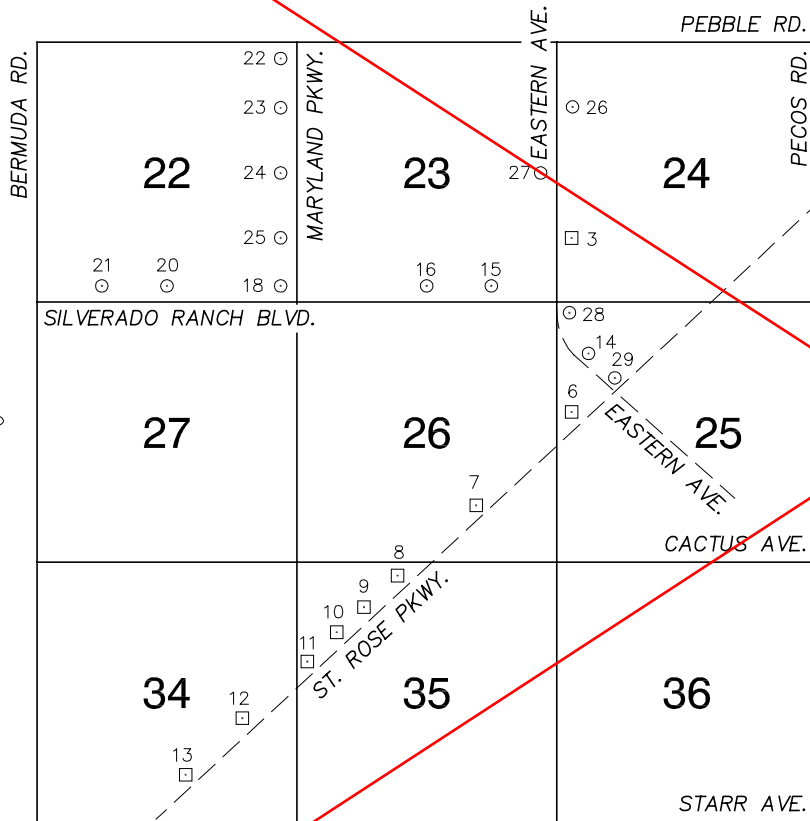
***2018 BENCHMARK NETWORK ADJUSTMENT SUPERSEDES THE 2003 BENCHMARK BOOK**

No.	STATION	ELEVATION (METERS)	DESCRIPTION	No.	STATION	ELEVATION (METERS)	DESCRIPTION
60	7C21 4SSE6 1997	663.773	S E T RIVET AND ROUND ALUMINUM PLATE IN TOP OF CURB, NORTHEAST CORNER OF WARM SPRINGS RD. AND PLACID ST. NEAR THE PC OF WARM SPRINGS RD.	73	0C21 4SWW6 2000	678.805	S E T RIVET AND ROUND ALUMINUM PLATE IN TOP OF CURB, SOUTHEAST CORNER OF LAS VEGAS BLVD. AND THE ON RAMP TO I-215 EAST BOUND. NEAR THE PC OF LAS VEGAS BLVD.
61	7C21 8N4 1997	692.747	S E T RIVET AND ROUND ALUMINUM PLATE IN TOP OF CURB, SOUTHEAST CORNER OF WARM SPRINGS RD. AND INDUSTRIAL RD. NEAR THE PC OF INDUSTRIAL RD.	74	0C21 4W4 2000	677.578	S E T RIVET AND ROUND ALUMINUM PLATE IN TOP OF CURB, NORTHEAST CORNER OF LAS VEGAS BLVD. AND I-215 WEST BOUND OFF RAMP NEAR THE PC OF LAS VEGAS BLVD.
62	7C21 6S4 1997	709.422	S E T RIVET AND ROUND ALUMINUM PLATE IN TOP OF CURB, NORTHEAST CORNER OF WARM SPRINGS RD. AND ARVILLE ST. NEAR THE PC OF WARM SPRINGS RD.	75	4C21 5NEE6	675.648	F N D 2" BRASS CAP IN TOP OF CURB, SOUTHWEST CORNER OF LAS VEGAS BLVD. AND THE NORTH ENTRANCE TO VACATION VILLAGE, NEAR THE PC OF LAS VEGAS BLVD.
63	7C21 17S6 1997	695.307	S E T RIVET AND ROUND ALUMINUM PLATE IN AN ELECTRICAL TRANSFORMER PAD. (# R392) WEST SIDE OF INDUSTRIAL RD. 175' SOUTH OF FORD AVE.	76	4C21 4NWS	672.297	F N D 2" DOME BRASS CAP ON TOP OF CURB, SOUTHEAST CORNER OF SUNSET RD. AND LAS VEGAS BLVD. NEAR THE PC OF SUNSET RD.
64	7C21 17N6 1997	693.815	S E T RIVET AND ROUND ALUMINUM PLATE IN TOP OF CURB, EAST SIDE OF INDUSTRIAL RD. 18' NORTH OF THE PC ON INDUSTRIAL RD. AT THE SOUTH END OF SILVERTON RV PARK.	77	0C21 18N4 2000	711.894	S E T RIVET AND ROUND ALUMINUM PLATE IN 8' X 8' CONCRETE PAD FOR WATER MANHOLE, ±50' EAST OF ARVILLE ST. AND ±150' SOUTH OF WINDMILL LN.
65	7C21 8SSW6 1997	698.334	S E T RIVET AND ROUND ALUMINUM PLATE IN TOP OF CURB, NORTHEAST CORNER OF BLUE DIAMOND RD. AND INDUSTRIAL RD. 25' NORTH OF THE PC OF INDUSTRIAL RD.	78	4C21 4C4	667.889	RIVET AND SQUARE ALUMINUM PLATE IN TOP OF CURB, SOUTHEAST CORNER OF GILESPIE ST. AND HIDDEN WELL RD. NEAR THE PC OF GILESPIE ST.
66	8C21 4SEE6 1998	657.635	S E T RIVET AND ROUND ALUMINUM PLATE IN TOP OF CURB, SOUTHWEST CORNER OF BERMUDA RD. AND ARBY AVE. NEAR THE PC OF BERMUDA RD.	79			
67	7C21 6W4 1997	714.128	S E T RIVET AND ROUND ALUMINUM PLATE IN A CONCRETE MONUMENT, NORTHEAST QUADRANT OF DECATUR BLVD. AND MAULE AVE.	80			
68			LOST 2003	81			
69	0C21 4S4 2000	670.606	S E T RIVET AND ROUND ALUMINUM PLATE IN TOP OF CURB, NORTHEAST CORNER OF WARM SPRINGS RD. AND GILESPIE ST. NEAR THE PC OF WARM SPRINGS RD.	82			
70	0C21 9SWW6 2000	683.200	S E T RIVET AND ROUND ALUMINUM PLATE IN TOP OF CURB, NORTHEAST CORNER OF LAS VEGAS BLVD. AND MESA VERDE LN. NEAR THE PC OF LAS VEGAS BLVD.	83			
71	0C21 9W4 2000	681.328	S E T RIVET AND ROUND ALUMINUM PLATE IN TOP OF CURB, NORTHEAST CORNER OF LAS VEGAS BLVD. AND ROBINDALE LN. NEAR THE PC OF LAS VEGAS BLVD.	CLARK COUNTY VERTICAL CONTROL v.2003			
72	0C21 9NWW6 2000	681.765	S E T RIVET AND ROUND ALUMINUM PLATE IN TOP OF CURB, NORTHEAST CORNER OF LAS VEGAS BLVD. AND ELDORADO ST. NEAR THE PC OF LAS VEGAS BLVD. AT THE ENTRANCE TO BELZ OUTLET.	CLARK COUNTY SURVEYOR'S OFFICE 5051 SOUTH PARADISE ROAD LAS VEGAS, NEVADA 89119 (702) 455-0640			CONVERSION FACTOR: METERS X $\left(\frac{3937}{1200}\right)$ = U.S. SURVEY FEET
				REVISED 09/01/2006		SHEET 4 OF 4	22-61 NW

FOR REFERENCE ONLY

***2018 BENCHMARK NETWORK ADJUSTMENT SUPERSEDES THE 2003 BENCHMARK BOOK**

**Township 22 South, Range 61 East
Southeast Quarter**



No.	STATION	ELEVATION (METERS)	DESCRIPTION
1			LOST 2003
2			LOST 2003
3	8C21 24SWW6	667.055	F N D RIVET AND SQUARE ALUMINUM PLATE, IN A CONCRETE PAD WITH WELL CASING. 100' EAST OF EASTERN AVE, NEAR THE ALIGNMENT OF RICHMAR AVE.
4			LOST 2003
5			LOST 2003
6	0C21 25W6	690.700	F N D NDOT CAP IN A CONCRETE MONUMENT, 20' NORTH OF ST. ROSE PKWY. E.O. AND 0.25 MILES WEST OF EASTERN AVE. STAMPED "H 217+83.79 POT DATE 12/21/56"
7	0C21 26E6	689.985	F N D RIVET AND SQUARE ALUMINUM PLATE, IN THE TOP OF HEADWALL ON THE NORTH SIDE OF ST. ROSE PKWY. 0.15 MILES EAST OF MILE MARKER 4.
8	0C21 35N4	700.525	F N D RIVET AND SQUARE ALUMINUM PLATE IN THE WEST TOP OF HEAD WALL ON THE NORTH SIDE OF ST. ROSE PKWY. 300' WEST OF SEVEN HILLS DR.
9	0C21 35N6	705.846	F N D NDOT CAP IN A CONCRETE MONUMENT, NORTH SIDE OF ST. ROSE PKWY. NEAR MILE MARKER 3.40. STAMPED "169+87.05 POT 12/20/51"
10	0C21 35NW6	711.105	F N D RIVET AND SQUARE ALUMINUM PLATE IN THE WEST TOP OF HEADWALL ON THE NORTH SIDE OF ST. ROSE PKWY. NEAR MILE MARKER 3.15.
11	0C21 35W4	713.857	F N D RIVET AND SQUARE ALUMINUM PLATE IN THE WEST TOP OF HEADWALL IN THE NORTHEAST CORNER OF ST. ROSE PKWY. AND THE PROJECTED MARYLAND PKWY. ALIGNMENT.

CLARK COUNTY VERTICAL CONTROL v.2003

NORTH AMERICAN VERTICAL
DATUM OF 1988
- ALL ELEVATIONS IN METERS -

CLARK COUNTY SURVEYOR'S OFFICE
5051 SOUTH PARADISE ROAD
LAS VEGAS, NEVADA 89119
(702) 455-0640

CONVERSION FACTOR:
METERS X $\left(\frac{3937}{1200}\right)$ = U.S. SURVEY FEET

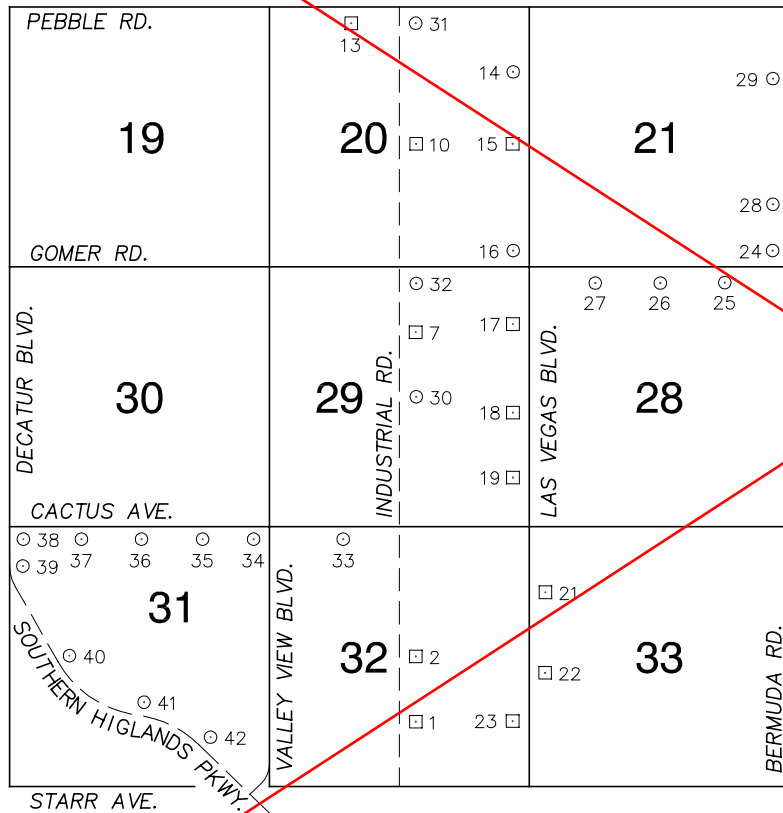
REVISED 2003	SHEET 1 OF 2	22-61 SE
--------------	-----------------	---------------------------

FOR REFERENCE ONLY
***2018 BENCHMARK NETWORK ADJUSTMENT SUPERSEDES THE 2003 BENCHMARK BOOK**

No.	STATION	ELEVATION (METERS)	DESCRIPTION	No.	STATION	ELEVATION (METERS)	DESCRIPTION
12	OC21 34SE6	714.055	F N D RIVET AND SQUARE ALUMINUM PLATE IN TOP OF HEADWALL, ON THE NORTH SIDE OF ST. ROSE PKWY. NEAR MILE MARKER 2.55.	25	8C21 22SEE6 1998	671.185	S E T RIVET AND ROUND ALUMINUM PLATE IN TOP OF CURB, NORTHWEST CORNER OF MARYLAND PKWY. AND RICHMAR AVE. NEAR THE PC OF MARYLAND PKWY.
13	OC21 34SSE6	716.274	F N D RIVET AND SQUARE ALUMINUM PLATE IN THE WEST TOP OF HEADWALL, ON THE NORTH SIDE OF ST. ROSE PKWY. NEAR MILE MARKER 2.35.	26	7C21 24NWW6 1997	654.166	S E T RIVET AND ROUND ALUMINUM PLATE IN TOP OF CURB, EAST SIDE OF EASTERN AVE. UNDER THE EASTBOUND OVERPASS OF I-215
14	7C21 25NWW6 1997	682.258	S E T RIVET AND ROUND ALUMINUM PLATE IN A CONCRETE ELEC. VAULT, 150' SOUTH OF IONE RD. AND EASTERN AVE. EAST SIDE OF EASTERN AVE.	27	7C21 23E4 1997	660.315	S E T RIVET AND ROUND ALUMINUM PLATE ON CONCRETE WING WALL ON SOUTH SIDE OF SERENE AVE. 70' WEST OF EASTERN AVE.
15	8C21 23SSE6 1998	672.604	S E T RIVET AND ROUND ALUMINUM PLATE IN TOP OF CURB, NORTH SIDE OF SILVERADO RANCH BLVD. 425' EAST OF SILVERADO CROSSINGS EASTERLY ENTRANCE.	28	7C21 25NWS 1997	672.011	S E T RIVET AND ROUND ALUMINUM PLATE IN TOP OF CURB, SOUTHEAST CORNER OF EASTERN AVE. AND IVANPAH DR. /SILVERADO RANCH BLVD. NEAR THE PC OF EASTERN AVE.
16	8C21 23S4 1998	673.390	S E T RIVET AND ROUND ALUMINUM PLATE IN TOP OF CURB, NORTHEAST CORNER OF SILVERADO RANCH BLVD. AND SPENCER ST. NEAR THE PC OF SILVERADO RANCH BLVD.	29	7C21 25NW6 1997	689.612	S E T RIVET AND ROUND ALUMINUM PLATE IN TOP OF CURB, NORTHEAST CORNER OF EASTERN AVE. AND ST. ROSE PKWY. NEAR THE PC OF EASTERN AVE.
17			LOST 2003	30			
18	8C21 22SES 1998	675.967	S E T RIVET AND ROUND ALUMINUM PLATE IN TRANSFORMER PAD, NORTHWEST CORNER OF SILVERADO RANCH BLVD. AND MARYLAND PKWY. 150' WEST OF MARYLAND PKWY.	31			
19			LOST 2003	32			
20	8C21 22S4 1998	678.721	S E T RIVET AND ROUND ALUMINUM PLATE IN TOP OF CURB, NORTHEAST CORNER OF GOMER RD. AND POLLOCK DR. NEAR THE PC OF GOMER RD.	33			
21	8C21 22SSW6 1998	679.211	S E T RIVET AND ROUND ALUMINUM PLATE IN TOP OF CURB, NORTH SIDE OF SILVERADO RANCH BLVD. NEAR THE PROPERT LINE OF SILVER CANYON HOMES.	34			
22	8C21 22NES 1998	664.392	S E T RIVET AND ROUND ALUMINUM PLATE IN TOP OF CURB, SOUTHWEST CORNER OF MARYLAND PKWY. AND PEBBLE RD. NEAR THE PC OF MARYLAND PKWY.	35			
23	8C21 22NEE6 1998	665.719	S E T RIVET AND ROUND ALUMINUM PLATE IN TOP OF CURB, WEST SIDE OF MARYLAND PKWY. 0.25 MILES SOUTH OF PEBBLE RD.	CLARK COUNTY VERTICAL CONTROL v.2003			
24	8C21 22E4 1998	668.219	S E T RIVET AND ROUND ALUMINUM PLATE IN TOP OF CURB, SOUTHWEST CORNER OF MARYLAND PKWY. AND SERENE AVE. NEAR THE PC OF MARYLAND PKWY.	CLARK COUNTY SURVEYOR'S OFFICE 5051 SOUTH PARADISE ROAD LAS VEGAS, NEVADA 89119 (702) 455-0640		CONVERSION FACTOR: METERS X $\left(\frac{3937}{1200}\right)$ = U.S. SURVEY FEET	
				REVISED 2003		SHEET 2 OF 2	22-61 SE

FOR REFERENCE ONLY
***2018 BENCHMARK NETWORK ADJUSTMENT SUPERSEDES THE 2003 BENCHMARK BOOK**

**Township 22 South, Range 61 East
 Southwest Quarter**



NORTH AMERICAN VERTICAL
 DATUM OF 1988
 - ALL ELEVATIONS IN METERS -

No.	STATION	ELEVATION (METERS)		DESCRIPTION
1	OC21 32S6	712.076	F N D	INVERTED ALUMINUM MONUMENT ON THE EAST SIDE OF INDUSTRIAL RD. 0.25 MILES NORTH OF STARR AVE.
2	OC21 32C4	706.030	F N D	NDOT CAP IN A CONCRETE MONUMENT, NORTHEAST CORNER OF INDUSTRIAL RD. AND ERIE AVE. STAMPED "STA A 106+75.91 DIST 35.00 ANGLE 90"
3				LOST 2003
4				LOST 2003
5				LOST 2003
6				LOST 2003
7	OC21 29N6	698.206	F N D	INVERTED ALUMINUM MONUMENT CENTERED BETWEEN A PAIR OF POWER POLES# ? SOUTHEAST QUADRANT OF INDUSTRIAL RD. AND LE BARON AVE.
8				LOST 2003
9				LOST 2003
10	OC21 20C4	696.163	F N D	RIVET AND SQUARE ALUMINUM PLATE IN THE WEST CENTER OF A 4'X3' CONCRETE PAD IN THE NORTHEAST CORNER OF INDUSTRIAL RD. AND SERENE AVE.
11				LOST 2003

CLARK COUNTY VERTICAL CONTROL v.2003

CLARK COUNTY SURVEYOR'S OFFICE
 5051 SOUTH PARADISE ROAD
 LAS VEGAS, NEVADA 89119
 (702) 455-0640

CONVERSION FACTOR:
 METERS X $\left(\frac{3937}{1200}\right)$ = U.S. SURVEY FEET

REVISED
 08/01/2003

SHEET
 1 OF 3

22-61
SW

FOR REFERENCE ONLY

***2018 BENCHMARK NETWORK ADJUSTMENT SUPERSEDES THE 2003 BENCHMARK BOOK**

No.	STATION	ELEVATION (METERS)	DESCRIPTION	No.	STATION	ELEVATION (METERS)	DESCRIPTION		
12			LOST 2003	25	8C21 28NNE6 1998	678.321	S E T RIVET AND ROUND ALUMINUM PLATE IN AN ELECTRICAL TRANSFORMER PAD, 85' EAST OF WELLINGTON ESTATES MAIN ENTRANCE, ON THE SOUTH SIDE OF SILVERADO RANCH BLVD.		
13	2C21 20NNW6	699.177	F N D RIVET AND SQUARE ALUMINUM PLATE IN AN ELECTRICAL TRANSFORMER PAD, SOUTH SIDE OF PEBBLE RD. 150' EAST OF PROCYON AVE.	26	8C21 28N4 1998	677.973	S E T RIVET AND ROUND ALUMINUM PLATE IN AN ELECTRICAL TRANSFORMER PAD, SOUTHEAST CORNER OF SILVERADO RANCH BLVD. AND GILESPIE ST.		
14	7C21 20NEE6 1997	684.116	S E T RIVET AND ROUND ALUMINUM PLATE IN TOP OF CURB, SOUTHWEST CORNER OF LAS VEGAS BLVD. AND AGATE AVE. NEAR THE PC OF LAS VEGAS BLVD.	27	8C21 28NNW6 1998	680.749	S E T RIVET AND ROUND ALUMINUM PLATE IN A CONCRETE TELEPHONE MANHOLE PAD, 45' SOUTH OF SILVERADO RANCH BLVD. AND 125' EAST OF HAVEN ST.		
15	4C21 20E4	685.233	F N D RIVET AND SQUARE ALUMINUM PLATE IN TOP OF CURB, NORTHWEST CORNER OF LAS VEGAS BLVD. AND SERENE AVE. NEAR THE PC OF LAS VEGAS BLVD.	28	8C21 21SEE6 1998	676.893	S E T RIVET AND ROUND ALUMINUM PLATE IN A CONCRETE MONUMENT, SOUTHWEST QUADRANT OF BERMUDA RD. AND RICHMAR AVE.		
16	7C21 20SES 1997	685.990	S E T RIVET AND ROUND ALUMINUM PLATE IN TOP OF CURB, NORTHWEST CORNER OF LAS VEGAS BLVD. AND SILVERADO RANCH BLVD. NEAR THE PC OF LAS VEGAS BLVD.	29	8C21 21NEE6 1998	668.151	S E T RIVET AND ROUND ALUMINUM PLATE IN AN ELECTRICAL MANHOLE VAULT, SOUTHWEST QUADRANT OF BERMUDA RD. AND AGATE AVE.		
17	4C21 29NEE6	686.071	F N D RIVET AND SQUARE ALUMINUM PLATE IN A CONCRETE MONUMENT, 500' NORTH OF LE BARON AVE. AND 25' WEST OF E.O. OF LAS VEGAS BLVD.	30	8C21 29C4 1998	697.995	S E T RIVET AND ROUND ALUMINUM PLATE IN A CONCRETE MONUMENT, NORTHEAST CORNER OF INDUSTRIAL RD. AND PYLE AVE.		
18	4C21 29E4	688.421	F N D RIVET AND SQUARE ALUMINUM PLATE IN A CONCRETE HEADWALL ON THE WEST SIDE OF LAS VEGAS BLVD. 320' SOUTH OF PYLE AVE.	31	7C21 20N4 1997	694.643	S E T RIVET AND ROUND ALUMINUM PLATE IN AN ELECTRICAL TRANSFORMER PAD, #(RR55) ON THE EAST SIDE OF INDUSTRIAL RD. 175' SOUTH OF PEBBLE RD.		
19	4C21 29SEE6	692.805	F N D RIVET AND SQUARE ALUMINUM PLATE IN A CONCRETE HEADWALL ON THE WEST SIDE OF LAS VEGAS BLVD. 400' SOUTH OF FRIAS AVE.	32	7C21 29N4 1997	697.572	S E T RIVET AND ROUND ALUMINUM PLATE IN A CONCRETE MONUMENT, EAST SIDE OF INDUSTRIAL RD. ± 180' SOUTH OF GOMER RD. NEAR CORNER OF BLOCKWALL.		
20			LOST 2003	33	3C21 32NNW6 2003	701.093	S E T RIVET AND ROUND ALUMINUM PLATE IN 3X3 LAS VEGAS VALLEY WATER DISTRICT CONCRETE PAD. SOUTH SIDE OF CACTUS AV. ± 480 FEET WEST OF INDUSTRIAL RD.		
21	4C21 33NWW6	702.035	F N D RIVET AND SQUARE ALUMINUM PLATE IN A CONCRETE HEADWALL ON THE WEST SIDE OF LAS VEGAS BLVD. 35' EAST OF THE NORTH 1/16 OF S32 I S33	34	3C21 31NES 2003	707.914	S E T RIVET AND ROUND ALUMINUM PLATE IN TOP OF CURB, SOUTH SIDE OF CACTUS AVE. ± 350 FEET WEST OF VALLEY VIEW BLVD.		
22	4C21 33W4	708.279	F N D RIVET AND SQUARE ALUMINUM PLATE IN A CONCRETE AT&T MANHOLE PAD, 50' EAST OF E.O. OF LAS VEGAS BLVD. 210' SOUTH OF ERIE AVE.	35	3C21 31NNE6 2003	711.779	S E T RIVET AND ROUND ALUMINUM PLATE IN TOP OF CURB, SOUTH SIDE OF CACTUS AVE. OPPOSITE THE HINSON ST. ALIGNMENT.		
23	4C21 32SEE6	716.396	F N D RIVET AND SQUARE ALUMINUM PLATE IN A CONCRETE HEADWALL ON THE WEST SIDE OF LAS VEGAS BLVD. 340' SOUTH OF MILE MARKER 30.	CLARK COUNTY VERTICAL CONTROL v.2003					
24	8C21 21SES 1998	679.549	S E T RIVET AND ROUND ALUMINUM PLATE IN AN ELECTRICAL TRANSFORMER PAD. NORTHWEST CORNER OF BERMUDA RD. AND SILVERADO RANCH BLVD. 275' WEST OF BERMUDA RD.	CLARK COUNTY SURVEYOR'S OFFICE 5051 SOUTH PARADISE ROAD LAS VEGAS, NEVADA 89119 (702) 455-0640			CONVERSION FACTOR: METERS X $\left(\frac{3937}{1200}\right)$ = U.S. SURVEY FEET		
							REVISED 08/01/2003	SHEET 2 OF 3	22-61 SW

FOR REFERENCE ONLY
***2018 BENCHMARK NETWORK ADJUSTMENT SUPERSEDES THE 2003 BENCHMARK BOOK**

No.	STATION	ELEVATION (METERS)		DESCRIPTION	No.	STATION	ELEVATION (METERS)		DESCRIPTION
36	3C21 31N4 2003	718.139	S E T	RIVET AND ROUND ALUMINUM PLATE IN TOP OF CURB, SOUTH SIDE OF CACTUS AVE. OPPOSITE THE ARVILLE ST. ALIGNMENT.					
37	3C21 31NNW6 2003	724.227	S E T	RIVET AND ROUND ALUMINUM PLATE IN TOP OF CURB, SOUTH SIDE OF CACTUS AVE. ±1320 FEET EAST OF DECATUR BLVD./SOUTHERN HIGHLANDS SWITCHOVER.					
38	3C21 31NWS 2003	728.914	S E T	RIVET AND ROUND ALUMINUM PLATE IN TOP OF CURB, SOUTHEAST CORNER OF CACTUS AVE. AND DECATUR BLVD./SOUTHERN HIGHLANDS PKWY. SWITCHOVER, NEAR THE PC OF SOUTHERN HIGHLANDS PKWY.					
39	3C21 31NWW6 2003	731.699	S E T	RIVET AND ROUND ALUMINUM PLATE IN TOP OF CURB, SOUTHEAST CORNER OF SOMERSET HILLS AVE. AND SOUTHERN HIGHLANDS PKWY. NEAR THE PC OF SOUTHERN HIGHLANDS PKWY.					
40	3C21 31W6 2003	727.441	S E T	RIVET AND ROUND ALUMINUM PLATE IN TOP OF CURB, EAST SIDE OF SOUTHERN HIGHLANDS PKWY. ±0.1 MILES NORTH OF STARR HILLS AVE.					
41	3C21 31S6 2003	719.915	S E T	RIVET AND ROUND ALUMINUM PLATE IN TOP OF CURB, EAST SIDE OF SOUTHERN HIGHLANDS PKWY. ±0.5 MILES NORTH OF THE INTERSECTION OF VALLEY VIEW BLVD. AND SOUTHERN HIGHLANDS PKWY.					
42	3C21 31SE6 2003	716.197	S E T	RIVET AND ROUND ALUMINUM PLATE IN TOP OF CURB, EAST SIDE OF SOUTHERN HIGHLANDS PKWY. ±0.2 MILES NORTH OF THE INTERSECTION OF VALLEY VIEW BLVD. AND SOUTHERN HIGHLANDS PKWY.					

CLARK COUNTY VERTICAL CONTROL v.2003

<i>CLARK COUNTY SURVEYOR'S OFFICE</i> 5051 SOUTH PARADISE ROAD LAS VEGAS, NEVADA 89119 (702) 455-0640		CONVERSION FACTOR: METERS X $\left(\frac{3937}{1200}\right)$ = U.S. SURVEY FEET	
REVISED 08/01/2003	SHEET 3 OF 3	22-61 SW	